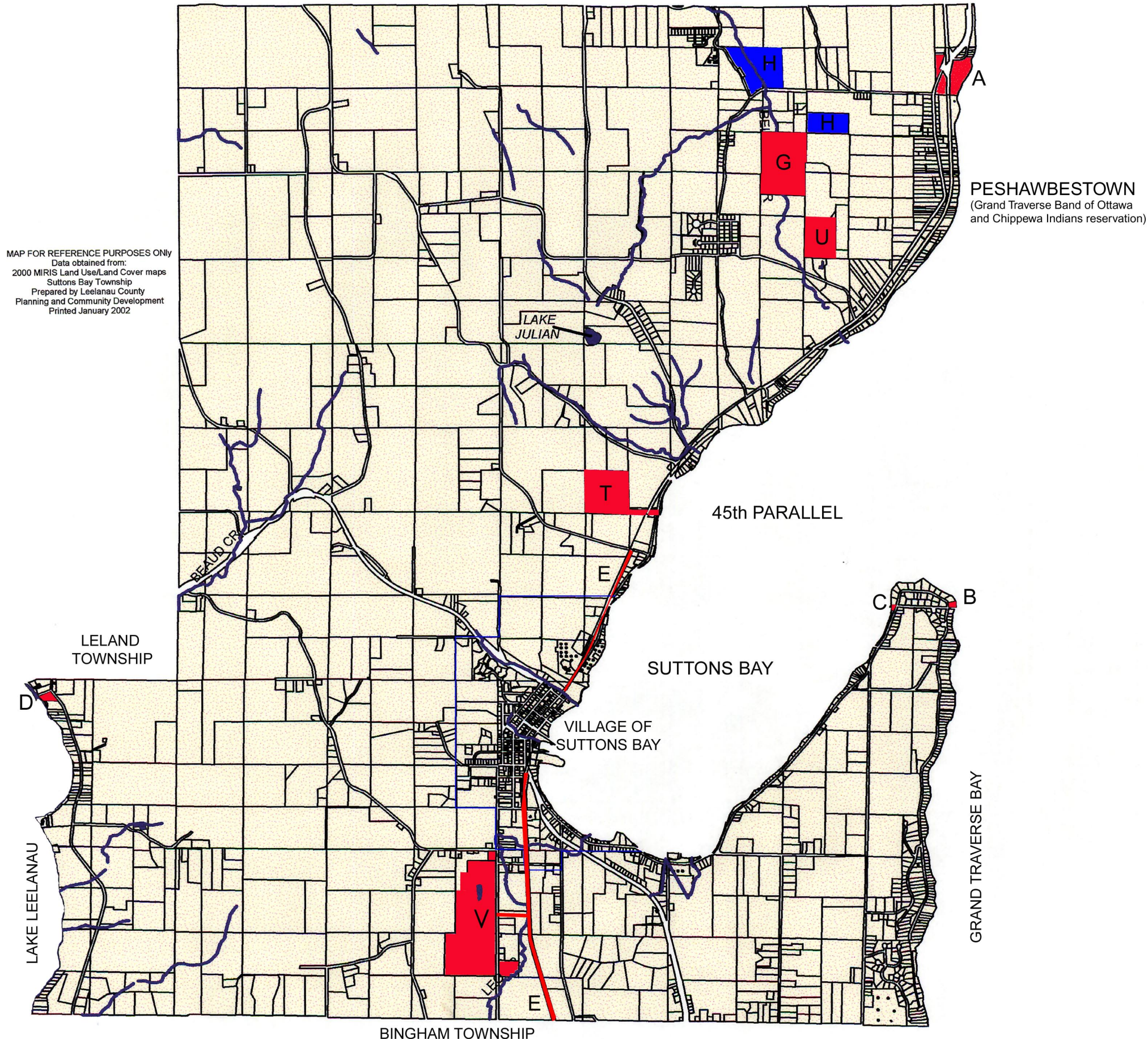


LEELANAU TOWNSHIP



MAP FOR REFERENCE PURPOSES ONLY  
 Data obtained from:  
 2000 MIRIS Land Use/Land Cover maps  
 Suttons Bay Township  
 Prepared by Leelanau County  
 Planning and Community Development  
 Printed January 2002

LEGEND

- Existing Parks
- Public Access by Guided Tour Only

Key to Recreation Facilities:

- A. Graham Green Park
- B. Vic Stiemel Park
- C. Lover's Lane
- D. Lake Leelanau Access
- E. Leelanau Trail
- F. *Removed From Inventory*
- G. 4-H Parcel Johnson Property
- H. Leelanau Conservancy Parcel  
*\*For facilities I through S, refer to Village of Suttons Bay Ex. Recreation Facilities map*
- T. 45th Parallel Park
- U. Strong Heart Recreation Center
- V. Herman Community Park  
 (In Development)

EXISTING RECREATION FACILITIES  
 (Revised 8-27-10 by R. Clark Associates, Inc.)

SUTTONS BAY TOWNSHIP,  
 LEELANAU COUNTY, MICHIGAN